

Jew Farmhouse



Unwind, Dream : Explore, Discover



Index

<i>Utilities</i>	3
<i>Tech</i>	5
<i>Other Info</i>	6
<i>Fire Safety</i>	7
<i>Furry Friends</i>	9
<i>Local Food Shopping</i>	10
<i>Out and About</i>	11
<i>Fancy a stroll?</i>	14
<i>Contact</i>	15
<i>Check Out</i>	16

Utilities

Heating

Our listed properties have been designed to be as eco-friendly as possible, as such they may have technology or systems you are unfamiliar with.

The barns are set at the optimum temperatures for occupancy, we kindly ask that you do not increase the temperature settings.

During the cooler months our wood-chip boilers work hard to keep you warm. And during the warmer months, we have installed discreet ventilation which are secure to leave open if you are heading out.

Hot Tubs

Our hot tubs are set at optimum temperature for use and cleaning cycles. If you turn down the temperature, please remember to put this back to 37 degrees.

The floating duck contains cleaning agent and should be kept in the hot tub when not in use.

If water drops below the sensor levels please notify us, as the tub won't filter.

Please close the lid when not in use.

Laundry

Our onsite laundry facilities include two washing machines, two tumble dryers, an iron and ironing board. The tumble dryers are condensers, so please empty the top left-hand drawer of water after each use. Washing baskets and detergent are provided.

Please respect that availability of the machines is on a first come, first served basis. We are unable to take responsibility for items left in the laundry, so please ensure you are around whilst your items are being laundered. Please kindly return laundry baskets when not in use for other guests to use. Thank you for your cooperation.

Bins

The bin shed is located within the car park, to the right of the Guest Laundry. Recycling is encouraged, general waste and designated recycling bins are labelled for convenience.



Wi-Fi

Network: TewBarns

Password: internet

TV

The main living areas are equipped with digital TV, Sky HD TV and Blu-Ray DVD Player. All bedrooms are equipped with televisions.

Bose® SoundLink Mini

Pairing with a Bluetooth Device:

1) With your Bluetooth device and the Bose® SoundLink® Mini speaker both turned on, press the Bluetooth button on the speaker to make the speaker discoverable. The Bluetooth indicator on the Bose® SoundLink® Mini speaker blinks blue to show that the speaker is discoverable.

2) Set your Bluetooth device to discoverable so it can discover (detect) the Bose® SoundLink® Mini speaker. Locate the Bluetooth device list in the user interface of your device.

3) From the Bluetooth device list, select the device named “Bose Mini SoundLink.”

4) If your Bluetooth device prompts you for a passcode, enter digits 0000 (four zeros) and press OK.

Some devices also ask you to accept the connection. Your Bluetooth device indicates when pairing is complete. The Bose® SoundLink® Mini speaker indicates pairing is complete when the Bluetooth indicator changes from blinking blue to solid white and the speaker emits a tone.

Other Info

Barbecues

Below the patios you will find two built in barbecues for guest use. Utensils are provided in the silver case in the kitchen of your barn.

Please bear in mind other guests may like to use the barbecues and as such we would be grateful if you could leave them clean following use. A barbecue cleaning brush and pails for soapy water are provided within the barbecue area.

Melanie Charles

Our talented friend Melanie Charles decorates the barns with her paintings of countryside creatures including her notorious cows, hares, stags and sheep. If you would be interested in purchasing one of her originals, prints or commission a piece – please let us know.

Candles

We have decorated the barns using battery operated candles. Please note burning of candles (naked flame) is prohibited.

Fire Safety

Please familiarise yourselves with the location of the fire exits and firefighting equipment. Water and Carbon Dioxide extinguishers are located at the entrance of each property and heat and smoke detectors are fitted throughout:

Water Extinguisher: Use on paper, cardboard, wood and clothes.

Carbon Dioxide Extinguisher: Use on flammable liquids and electrical equipment.

Fire Action Plan

Action on discovery of a fire:

- Leave fire area and close doors to confine fire if safe to do so
- Do not stop to collect personal belongings
- Alert other occupants immediately
- Evacuate the building at the nearest fire exit. Break glass for key where applicable
- Call the Fire and Rescue Service
- Do not stay to put the fire out unless it is safe to do so
- Proceed to the Fire Assembly Point - **Front Car Park**
- Do not re-enter the building until the Fire and Rescue Service have said it is safe to do so

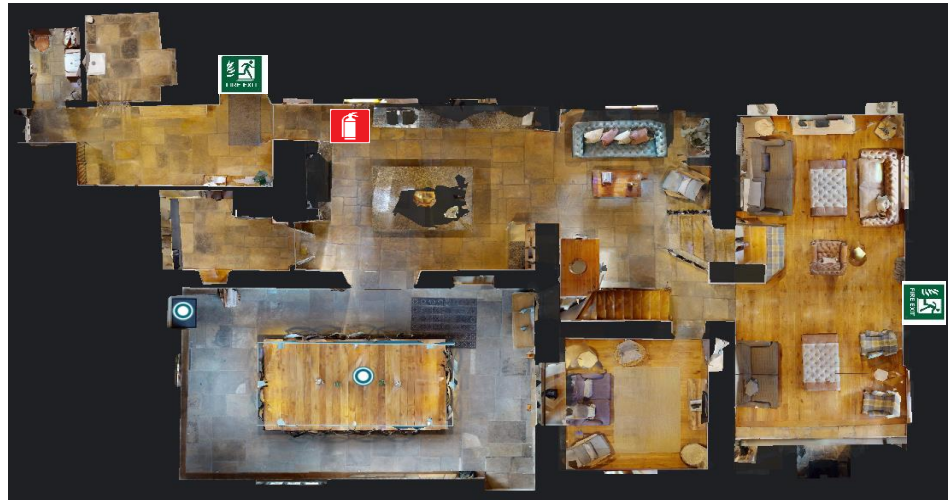
To call the Fire Rescue Service:

- Dial **999**
- When the operator answers ask for **FIRE**
- When the Fire and Rescue Service answer, provide the following address:

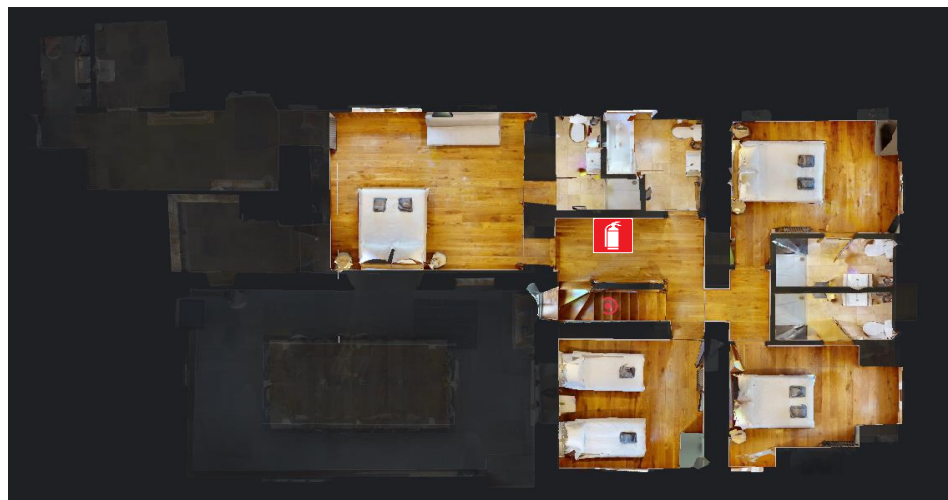
Tew Farmhouse & Barns, Enstone Road, Great Tew, Oxfordshire OX7 4AB

Fire Evacuation Plan

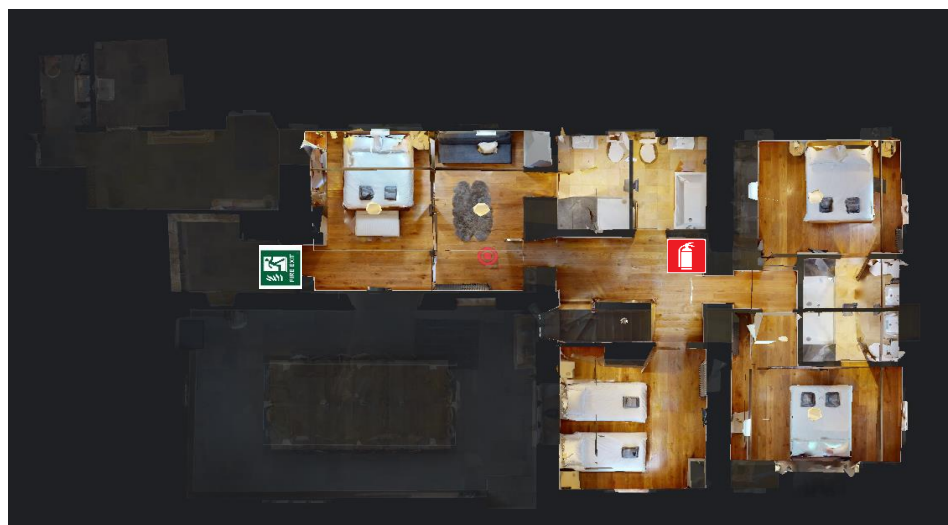
Ground Floor



First Floor



Second Floor



Furry Friends

A family of dog lovers, we welcome your well-behaved pooches and have left a dog bowl and lead for you to borrow during your stay.

Please note, as stated in our terms and conditions, dogs are expected to remain on a lead when in communal areas and please ensure all fouling is dealt with immediately for the sake and hygiene of other guests.

Dogs are allowed downstairs with the exception of bedrooms and are not permitted upstairs.

Thank you for respecting our terms.



Local Food Shopping

Listed by locality:

Marks & Spencers

Unit 1, Windmill Square, Chipping Norton OX7 5EJ (6 miles)

The Co-operative

High Street, Chipping Norton, OX7 5AB (6 miles)

Sainsbury's

12-14 Market Place, Chipping Norton OX7 5NA (6 miles)

Roger's Fishmongers

22 New Street, Chipping Norton OX7 5LJ (6 miles)

Eagles

Market Place, Deddington, OX15 0SE (6 miles)

Wykham Farm Shop

Wykham Lane, Banbury OX16 9UP (8 miles)

Daylesford Organic Farm Shop

Daylesford, Kingham, GL56 0YG (13 miles)

Waitrose

Woolgate Shopping Centre, Market Square, Witney OX28 6AR (14 miles)

Supermarkets that deliver:

Ocado

www.ocado.co.uk

Waitrose

www.waitrose.co.uk

Sainsbury's

www.sainsburys.co.uk

Tesco

www.tesco.com

Out and About

Coffee and Cake

Quince & Clover

Great Tew

Nestled within the green of the village, the local café offers a seasonal menu of hot and cold food, fresh bread, something for the sweet tooth and marvellous milkshakes. Available to grab and go or perch outside.

Daylesford Organic

Kingham

One of the most luxury farm shops in Britain, Daylesford's philosophy of organic and seasonal food produces delicious coffee and cake – and breakfast, lunch and supper! Whilst visiting check out their farm shop and surrounding barns filled with luxury stock.

Pubs and Restaurants

The Falklands Arms

Great Tew

Our local for a glass of something cold, the 16th century building is located in the heart of the village. Its traditional, untouched décor of flagstone floors, ceiling oak beams hung with tankards, log fire and grassy beer garden makes it a popular choice in the Cotswolds.

The Boxing Hare

Swerford

Just across the valley from Tew sits The Boxing Hare, formally known as The Mason's Arms. A country gastropub with a beer garden and modern menu of tantalising fine food. Be an informal meal, celebration or family outing – it's highly recommended and worth a visit.

The Wild Rabbit

Kingham

Lady Bamford (Daylesford Organic) has re-invented this traditional English inn. Its rustic interior and organic, seasonal dishes oozes class

Wild Thyme

Chipping Norton

Just down the road in the Cotswold market town of Chipping Norton, Wild Thyme is a cosy restaurant with a relaxed and friendly atmosphere – seating just 35 diners. Their menu consists of homemade and locally sourced British food with an influence of Mediterranean cuisine.

Thai Shire

Chipping Norton

A hidden gem for fuss-free authentic Chinese, Thai and Malaysian dishes. A family run restaurant with lovely hosts. Be sure to book a table on a Friday night or weekend.

The Kings Head

Bledington

A must for Sunday lunch, The Kings Head is a 16th century inn situated on the village green of Bledington. Their sister inn - The Swan at Swinbrook – is also an idyllic setting in the Cotswolds serving lunch and dinner.

Days Out

Soho Farmhouse

Great Tew

A member's only club set within 100 acres of Great Tew, Soho Farmhouse is the ultimate countryside playground with restaurants, bars, Cowshed spa, stables, cinema...the list goes on. A very cool, very stylish and fabulously charming 'farm' just around the corner.

Burford Town and Burford Garden Company

Burford

Burford has to be one of the prettiest medieval towns in the Cotswolds, packed with galleries, shops, eateries and one of the top twenty churches in the country.

The Burford Garden Company, on the outskirts of the town, is the home and garden store of the Cotswolds. A stylish garden centre with an eclectic yet beautiful range of home interior, clothing, food, gifts and art gallery.

Tel: 01608 683740 | email: info@luxuryinthecotswolds.co.uk | www.luxuryinthecotswolds.co.uk

Cotswold Wildlife Park and Gardens

Burford

The Cotswold Wildlife Park is one of the largest privately owned zoological collections in the UK, and lucky for us it is right on our doorstep. Exhibiting over 260 different species of animals and set in 160 acres of parkland.

Blenheim Palace

Woodstock

Blenheim Palace is a true national treasure, best known as the birthplace of Winston Churchill. The Palace is a monumental country house set in the heart of Woodstock. There is plenty to do taking a guided tour of the rooms, walking around the stunning grounds, getting lost in the giant maze, visiting the Pleasure Gardens or attending one of their many great events.

The Ashmolean Museum

Oxford

The Ashmolean, recently redesigned in a £61 million project, is the first public museum in the UK and one of the oldest in the world. Highlights include mummies from Ancient Egypt, sculpture from Greece and Rome and paintings and drawings by masters such as Raphael, William Turner, Van Gogh, Picasso, Michelangelo and Eastern Art.

Cotswold Farm Park

Kineton

Run by Adam Henson (Countryfile) the farm holds over 50 collections of rare breed farm animals, with games and activities. The Touch Barn and Demo Barn can be enjoyed all year round with an adventure playground, farm safari, lion maze, tractor school – needless to say there is lots of children entertainment.

Bicester Village

Bicester

A village of outlet designer shopping, Bicester Village hosts brands such as Prada, Burberry, Gucci, Stella McCartney and Mulberry and also high end high street stores such as Barbour, Jack Wills, All Saints and The White Company. With over 130 stores it is a luxury shopping haven with food stop-offs such as Soho Farmshop, Itsu, Pret and Villandry.

Don't forget to check out our blog at www.luxuryinthecotswolds.co.uk for our directory of local recommendations and events.

Fancy a stroll?

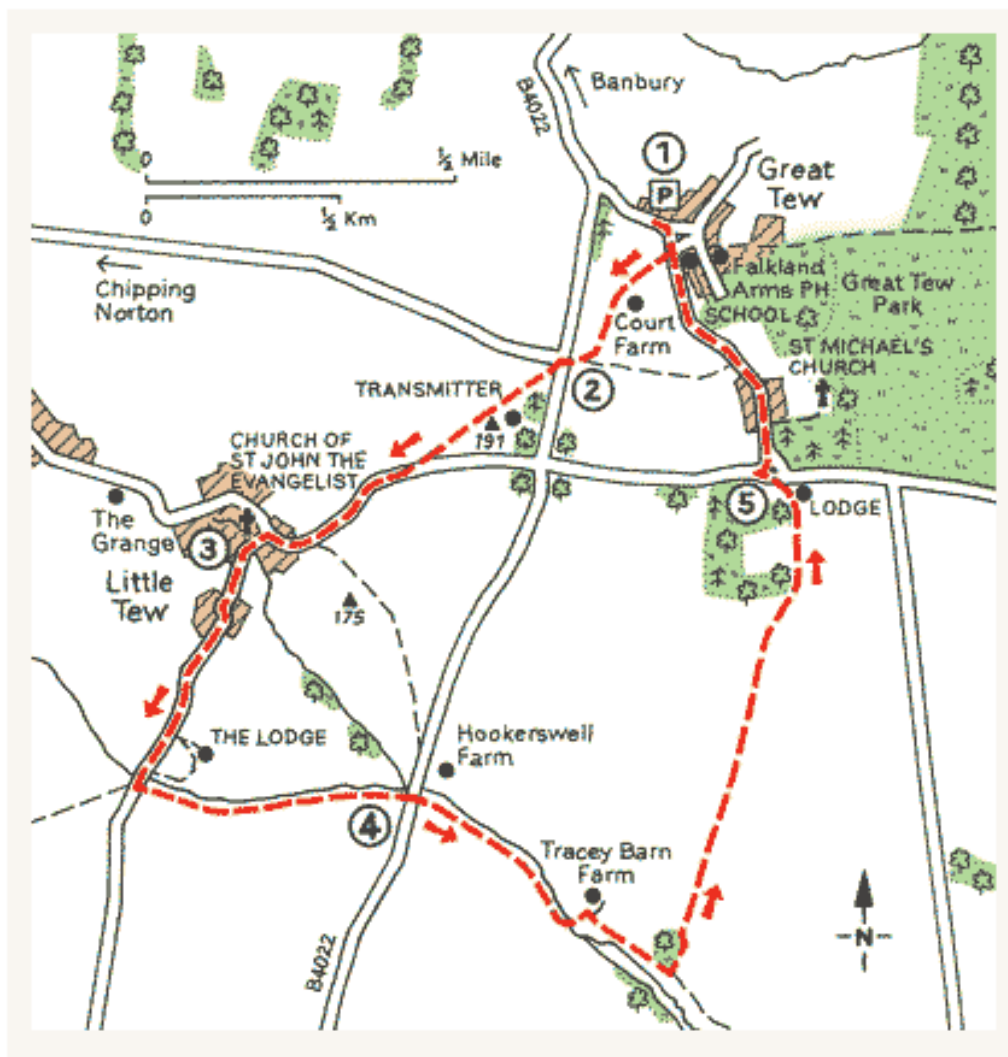
The Village of Great Tew

www.theaa.com/walks/the-village-of-great-tew-a-rare-plot-420807

Distance: 4 miles (6.4km)

Minimum time: 1 hour 45 minutes

Level of difficulty: Easy



OS Maps can be found within the TV units in the living area should you wish to borrow and explore...

Tel: 01608 683740 | email: info@luxuryinthecotswolds.co.uk | www.luxuryinthecotswolds.co.uk

Contact

Laura Bowden

Mobile: 07525217156

Email: laura@luxuryinthecotswolds.co.uk

Tillie Snell

Mobile: 07711880703

Email: tillie@luxuryinthecotswolds.co.uk

Taxi Companies

Excelsior: 01608 643721/01608 644015

Blenheim Taxis: 07773000444

Castle Cars: 01295 270011

And just in case...

Doctors

Chipping Norton Health Centre, Russell Way, Chipping Norton, Oxfordshire OX7 5FA

Telephone: 01608 642742

(On-site pharmacy and out of hours first aid unit)

Hospital, A&E

John Radcliffe Hospital, Headley Way, Headington, Oxford OX3 9DU

Telephone: 01865 741166

Vets

Chipping Norton Veterinary Hospital, Banbury Road, Chipping Norton, Oxfordshire OX7 5SY

Telephone: 01608 642547

Tel: 01608 683740 | email: info@luxuryinthecotswolds.co.uk | www.luxuryinthecotswolds.co.uk

Check Out

Thanking for choosing to stay at Tew Farmhouse and Barns. We hope you enjoyed your stay with us.

Please sign, comment or doodle in our guest books. Any feedback is greatly appreciated and can be emailed to info@luxuryinthecotswolds.co.uk

Please note checkout is at 10:00am and on departure please leave keys in the key lock box using the access code provided.

We hope to see you again soon,

Best wishes

Luxury in The Cotswolds